

## Models: 62ST & 63ST; 10GSST Stainless Steel Case & Stainless Steel Internals

### Case

AISI 304 Stainless Steel on 10" Case (316SS standard on 6")  
Bezel Stainless Steel (Bayonet type).  
Weatherproof Construction

### Socket + Element

AISI 316 Stainless Steel

### Thread

1/8", 1/4", 3/8", 1/2" NPT, BSP, BSPT

### Movement

Stainless Steel

### Dial

White Aluminium (Black Printing)  
Fine scale markings  
Anti parallax mirror band

### Pointer

Black Aluminium (Knife edge)

### Window

Sheet Glass

### Standard Size

150mm (6"), 250mm (10")

### Accuracy class

0.25% or 0.5% of Full scale  
Over 1600 bar (24,000 psi) on rising pressure only.

### Scale Range

150mm (6"), 250mm (10") Vacuum to 2,000 bar (30,000 psi)  
Calibration certificate is issued for each gauge  
showing increasing and decreasing readings  
against Dead - Weight Testers

### Ordering information

State:- Pressure gauge model  
/ Nominal size / Scale range  
/ Size and location of connection  
/ Optional extras reqd.

### Optional extras

AISI 316 Stainless steel case (Standard on 62ST & 63ST).  
Other pressure connections (including high pressure).  
Monel to Nace MR-01-75 wetted parts.  
Laminated safety glass (Standard on 62ST & 63ST)/ Perspex window.  
**Can be supplied in the Safety Pattern type.**



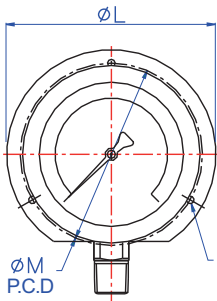
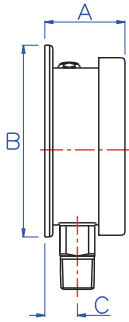
Model - 63ST

We manufacture a wide range of instruments to customer's special requirements  
We shall be pleased to discuss and advise on your specifications.

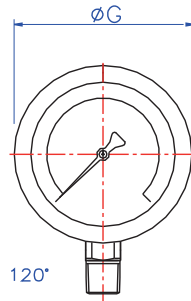
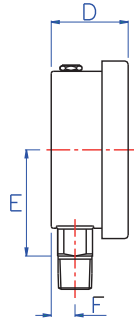
Specifications and dimensions given in this leaflet represent the state of engineering at the time of printing.  
Engineering modifications may take place without prior notice.

**Models: 62ST & 63ST; 10GSST**  
Stainless Steel Case & Stainless Steel Internals

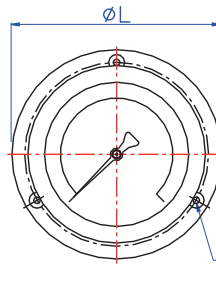
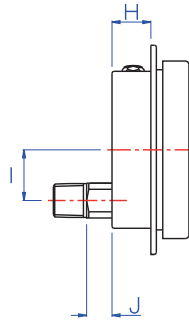
Surface Mounted  
Rear Flange (R)



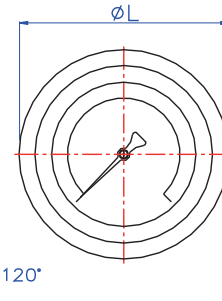
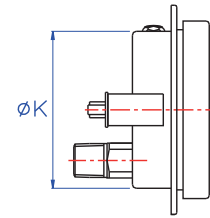
Direct Mounted  
(Standard)



Flush Mounted  
Screw Fixing  
Panel Mount (FP)



Flush Mounted  
Clamp Fixing  
(C)



Dimensions Diameter	A	B	C	D	E	F	G	H	I	J	K	L	M	N	O	Panel Cut-out
150 (6")	50.5	174	17	48.5	93	15	162	24.5	32	18	148	185	168	5	5.8	153
250 (10")	51.5	*294	19	51.5	148	19	252	43.5	52	16	248	302	273	6.5	6.35	270

\* Mounting lugs are used instead of surface flange.